



**Small Electrofusion Saddle
32mm-125mm
Installed on Main Pipe
110mm-800mm
Cheaper than Pull-out Butt
Fusion Saddle In The Workshop**



www.smartjoint.net

sales@smartjoint.net

Small EF Saddle Branch Size Table

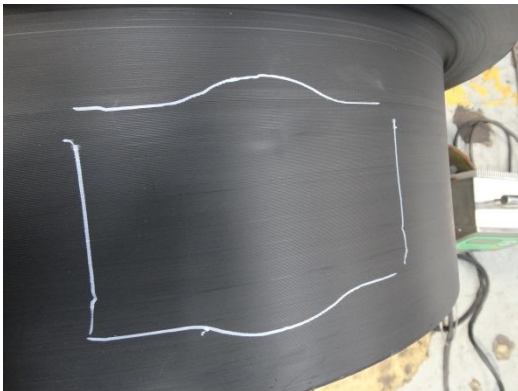
[illegible]

Branch 63mm Installed on 800mm main pipe

1: Put the EF Saddle on the pipe and use the white pen to draw the shape of the saddle bottom on the pipe surface.

2: Scrapping the surface of the marked pipe surface area. This is a must.

3: Scrapping the bottom surface of the EF saddle. This is a must.



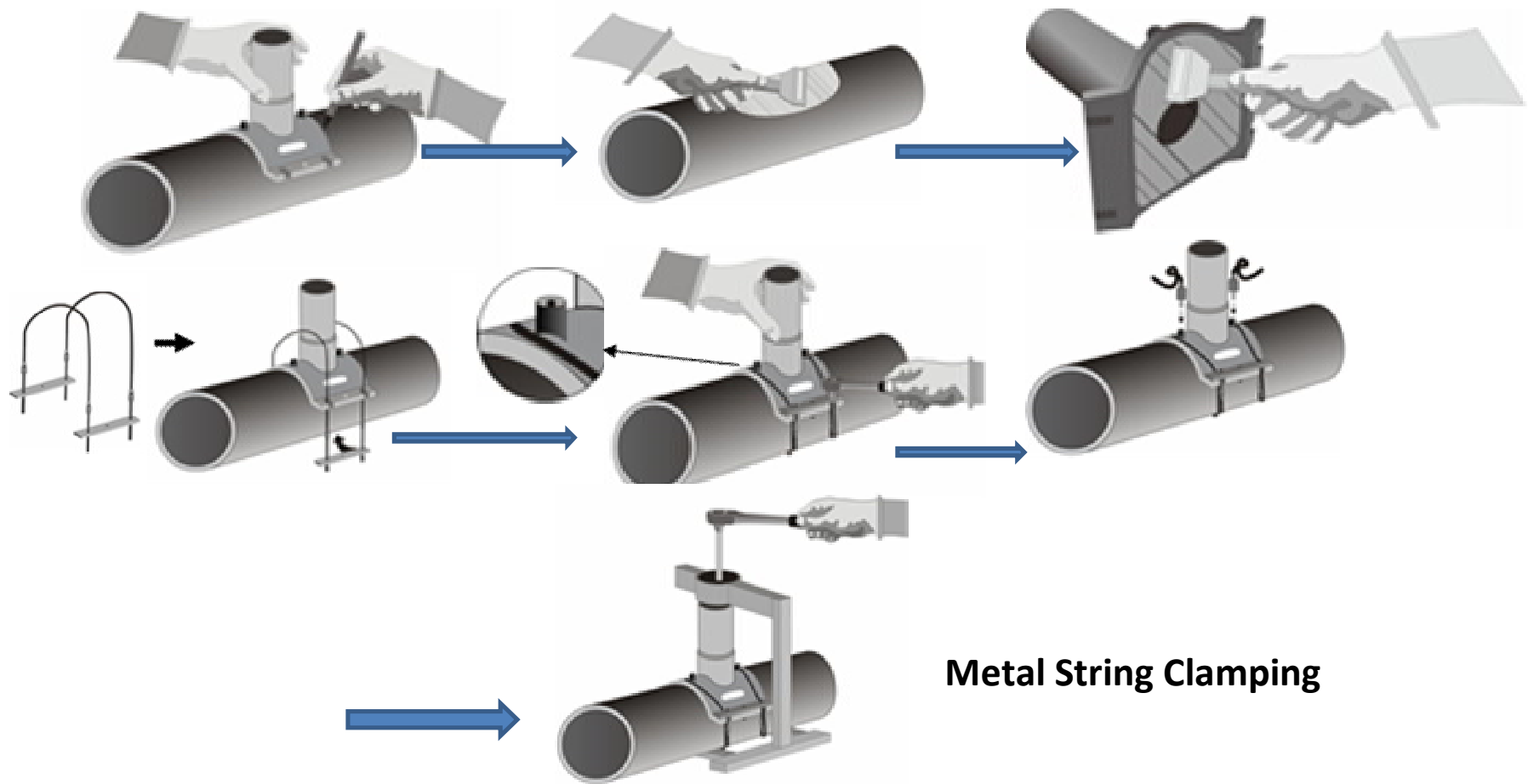
Clamping For Large Main Pipe

For Large Main Pipe (450-800) Clamping, Nylon Clamping Belt will be supplied per request, there is no need to match each saddle with one clamping belt. Tighten the clamping belt with force till there is no gas between the pipe and the saddle.



Clamping For Small Main Pipe

- For Small Main Pipe (110-400) Clamping, Metal String Clamping Belt is supplied for each saddle, Nylon Clamping belts is supplied per request.



Tensile Test



Smart Joint conduct all necessary tests required by ISO standard for the produced Electrofusion Saddle.

All tests pass.

Pictures of tensil test are showed above, for detailed test report, pls contact with our QC dept. qc@smartjoint.net

More Information Pls contact with Smart Joint
sales@smartjoint.net

© Copyright 2014-2020, Smart Joint. All rights reserved.

All materials, content and forms contained in this presentation are the intellectual property of Smart Joint and may not be copied, reproduced, distributed or displayed without Smart Joint's express written permission.

Smart Joint does not warrant, either expressly or implied, the accuracy, timeliness, or appropriateness of the information contained on this website. Smart Joint disclaims any responsibility for content errors, omissions, or infringing material and disclaims any responsibility associated with relying on the information provided on this presentation.